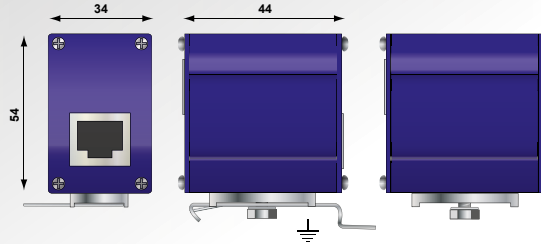
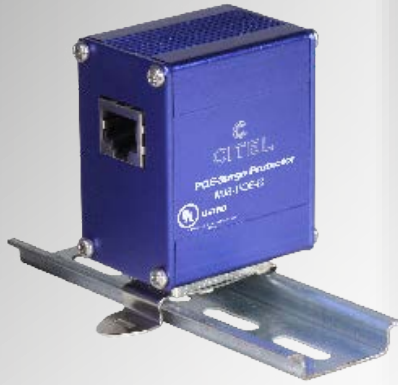


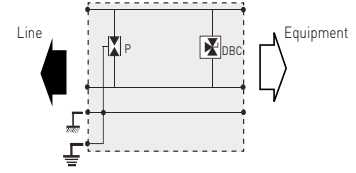
## Gigabit POE Surge Protectors MJ8-POE



Mounting Flange

Rail DIN mounting

Screw lug



P : 3-electrode gas tube  
DBC : 3-pole Low capacitance diode

- **POE compatible**
- **Shielded enclosure and connectors**
- **2 kA discharge capability**
- **IEC 61643-21 and EN 61643-21 compliance**
- **UL497B**

## Characteristics

CITEL Model		MJ8-POE-A	MJ8-POE-B
Description		RJ45 surge protector for POE-A	RJ45 surge protector for POE-B
Network		POE and Gigabit Ethernet, High POE	POE and Gigabit Ethernet, High POE
Max. data rate		1000 Mbps	1000 Mbps
SPD configuration		4 pairs + shielded	4 pairs + shielded
Pin outs		(1-2)(3-6)(4-5)(7-8)	(1-2)(3-6)(4-5)(7-8)
Nominal line voltage	Un	48 Vdc	5 Vdc/48 Vdc
Max. DC operating voltage	Uc	60 Vdc	7.5 Vdc (1.2.3.6) - 60 Vdc (4.5.7.8)
Max. Load current	IL	1200 mA	1200 mA
Max. frequency	f max	> 100 MHz	> 100 MHz
Insertion loss		< 1 dB	< 1 dB
Line/Ground Nominal discharge current <i>8/20µs Test x 10 - category C2</i>	In	2000 A	2000 A
Nominal discharge current Line/Line <i>8/20µs Test x 10 - category C2</i>	In	500 A	500 A
Impulse current - <i>2 x 10/350µs Test - D1 Category</i>	Iimp	500 A	500 A
Protection level	Up	70 V	20/70 V
Failsafe behavior		Short-circuit	Short-circuit
<b>Mechanical characteristics</b>			
Dimensions		see diagram	
Format		Metallic box with connectors input/output	
Connection to Network		RJ45 shielded connector female input/output	
Disconnection indicator		transmission interrupt	
Mounting		Mounting flange, Screw lug, DIN Rail	
Operating temperature		-40/+85°C	
Protection rating		IP20	
Housing material		Aluminium	
Standards compliance		IEC 61643-21 / EN 61643-21 / UL497B IEEE 802-3ab/3at	
<b>Part number</b>		581519	581518

